

## Roof mounted cooling unit



## Description

<b>Order Number:</b>	950600001
<b>Brand Name:</b>	SLIMLINE PRO TOP
<b>Colour:</b>	RAL 7035
<b>Housing Material:</b>	Stainless steel AISI 304
<b>IP protection class to EN 60 529:</b>	IP 54
<b>Approvals:</b>	CE, cURus

## Technical Data

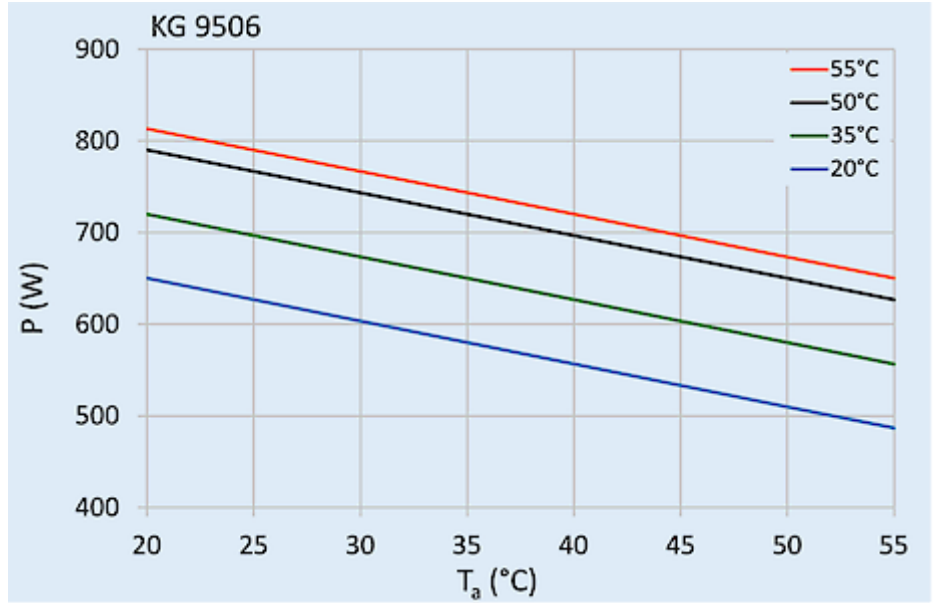
<b>Cooling capacity L35L35 (EN14511-3):</b>	650 W
<b>Cooling capacity L35L50 (EN14511-3):</b>	580W
<b>Compressor type:</b>	Rotary piston
<b>Refrigerant / GWP:</b>	R134a / 1430
<b>Refrigerant charge:</b>	120 g / 4.23 oz.
<b>High / low Pressure:</b>	28 / 6 bar 406 / 87 psig
<b>Air flow volume (system / unimpeded):</b>	Ambient air circuit: 408 m <sup>3</sup> /h Enclosure air circuit: 265 m <sup>3</sup> /h
<b>Operating Temperature Range:</b>	5°C - 55°C
<b>Mounting:</b>	Roof mounted
<b>Dimensions A x B x C (D+E):</b>	368 x 400 x 325 mm
<b>Weight:</b>	16.4 kg
<b>Voltage / Frequency:</b>	230 V ~ 50/60 Hz
<b>Current L35L35:</b>	1.7 / 1.6 A
<b>Starting current:</b>	6 A
<b>Max. current:</b>	2.2 A
<b>Nominal power L35L35:</b>	337 W
<b>Fuse:</b>	15 A (T)
<b>Short-circuit current rating:</b>	5 kA
<b>Connection:</b>	4 pole connector for power 5 pole connector for signals 3 pole connector for RS 485 MODBUS

Please click on the graphics to download.

More CAD drawings can be found under [Product Download](#).

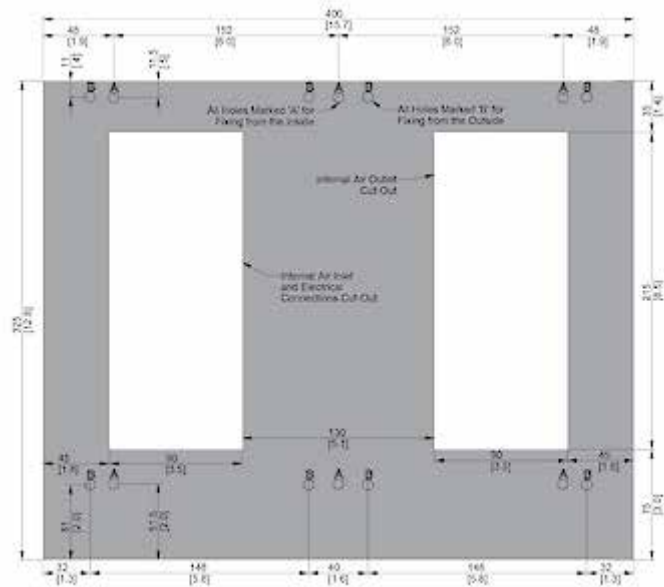
> [Overview Product Group SLIMLINE PRO TOP - roof mounted cooling units](#)

**Performance graph:**



[click image to enlarge](#)

**Dimensions:**



[click image to enlarge](#)

## Order Information

<b>Stainless steel housing part no.</b>	950600S62
---	-----------

<b>Taric Code</b>	84158200
-------------------	----------